

Date 10/23/98
Project University of Georgia Physical Master Plan
Subject Existing Campus Conditions Introduction (Section III)
From Ayers / Saint / Gross
To University of Georgia

The objective of this section is to record the conditions and characteristics of the existing Main Campus.

Architects and Campus Planners

Ayers/Saint/Gross

222 Saint Paul Place
Baltimore, MD 21202
410/347-8500
Fax 410/347-8519

The University of Georgia as a mature institution has distinct characteristics that form its identity. This unique identity that separates this University from other institutions is comprised of not only the academic but also the physical characteristics of the campus.

Architecture and Engineering

Heery International

999 Peachtree Street, NE
Atlanta, GA 30367
404/881-9880
Fax 404/875-1283

The academic climate of a University can be supported and complemented by the physical condition of its campus. Because of the uniqueness of the University of Georgia, there are certain needs that the physical master plan will have to identify in order to address. For the planning team to develop a clear understanding of the needs of the University, it is necessary for a complete inventory of existing conditions to be taken and recorded. This section of the Template records the observations of the Existing Campus Conditions Inventory of Main Campus. This section includes information that falls into three categories: the campus grounds, campus infrastructure and community setting.

Landscape Architecture

Hughes, Good, O'Leary & Ryan

1708 Peachtree Street, Suite 444
Atlanta, GA 30309
404/876-7726
Fax 404/876-6858

Traffic Engineering

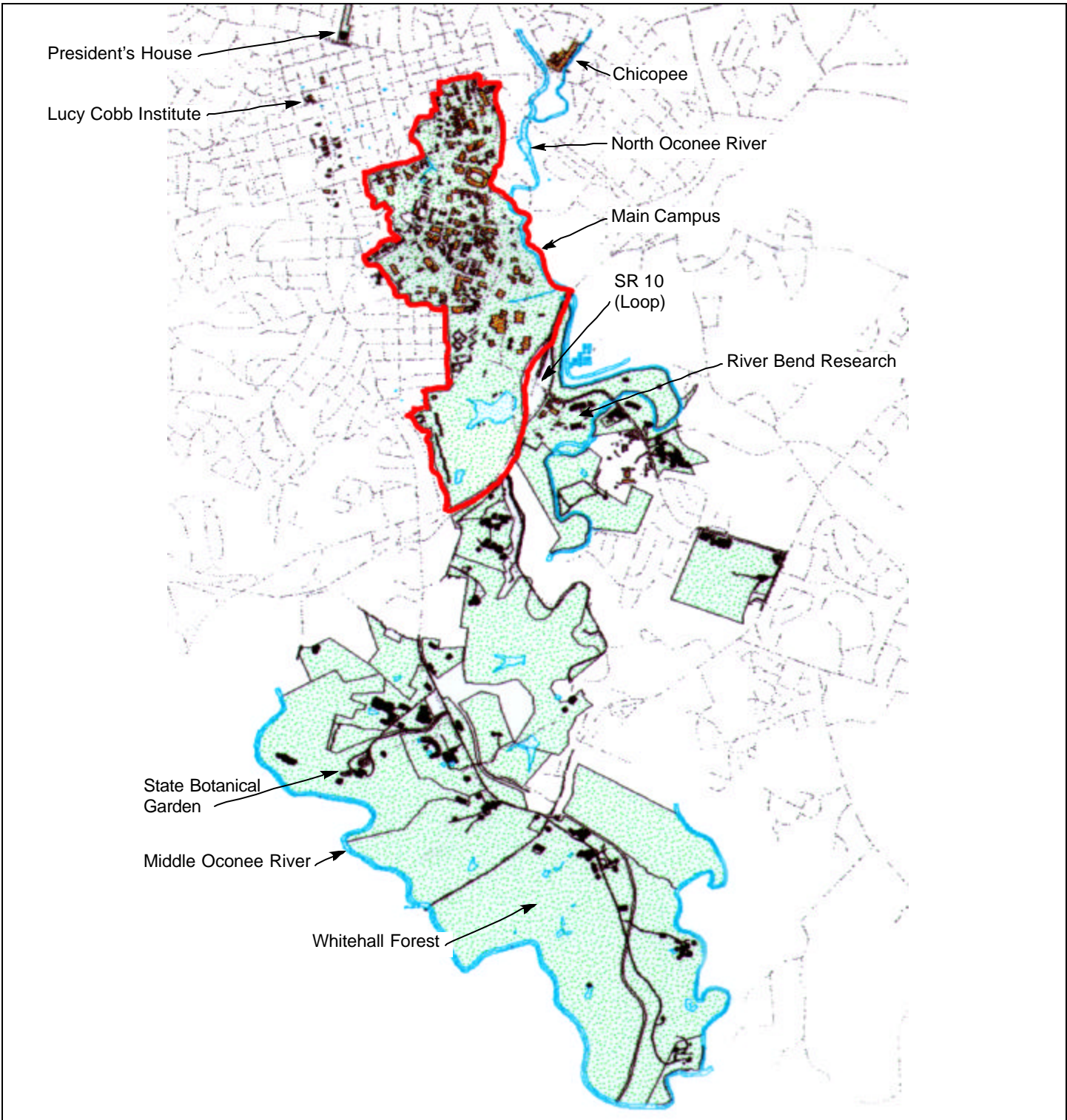
LRE Engineering

1475 Peachtree Street, Suite 220
Atlanta, GA 30309
404/888-8800
Fax 404/876-7797


Academic Programming

Paulien & Associates

899 Logan Street, Suite 508
Denver, CO 80203-3156
303/832-3272
Fax 303/832-3380



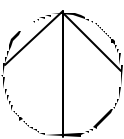
Not to Scale
August 18, 1997

 UGA Property

**UGA Master Periphery
Property Map
(area contained within
Athens/Clarke County)**

The contiguous property area
northwest of SR10 that is
outlined in red is considered in
this document as Main Campus

**The University of Georgia
Physical Master Plan**



Date November 1997

Project University of Georgia Physical Master Plan

Subject Existing Elevations (figure III A 1.1a)

From Hughes, Good, O'Leary & Ryan

To University of Georgia

Architects and Campus Planners

Ayers/Saint/Gross

222 Saint Paul Place
Baltimore, MD 21202
410/347-8500
Fax 410/347-8519

The purpose of this technical memorandum is to discuss the existing topographical elevations on the University of Georgia campus.

Analysis of topographic conditions, specifically relative elevations, demonstrates the general character of the land and provides useful information for planning efforts. Elevations and slopes directly impact how and where development occurs.

Architecture and Engineering

Heery International

999 Peachtree Street, NE
Atlanta, GA 30367
404/881-9880
Fax 404/875-1283

1. TOPOGRAPHIC HIGH POINTS AND LOW POINTS

1.1 Elevations above 750'

The main campus of University of Georgia has only a small portion of land at an elevation of greater than 750', this high point is confined to the quadrangle portion of the North Campus. This part of the campus is near the same elevation as the highest portions of the city of Athens.

1.2 Elevations between 750' and 600'

The majority of the main campus of University of Georgia lies between the elevations of 750' and 600'. Over fifty percent of Central Campus lies at elevations between 600' and 650'. There is a ridge, with elevations between 700' and 750', that runs between the athletic complex on the east side of Lumpkin Street (including the Butts-Mehre building) and the Chemistry building near Connor Hall. This ridge elevation and elevations between 650' and 700' make up the majority of South and West Campus.

1.3 Elevations below 600'

The only portions of the main campus of University of Georgia that are below 600' are adjacent to the North Oconee River in a valley within the East Campus. This lowest area remains undeveloped and in fact separates the existing developed portions of East Campus into two distinct regions.

Landscape Architecture

Hughes, Good, O'Leary & Ryan

1708 Peachtree Street, Suite 444
Atlanta, GA 30309
404/876-7726
Fax 404/876-6858

Traffic Engineering

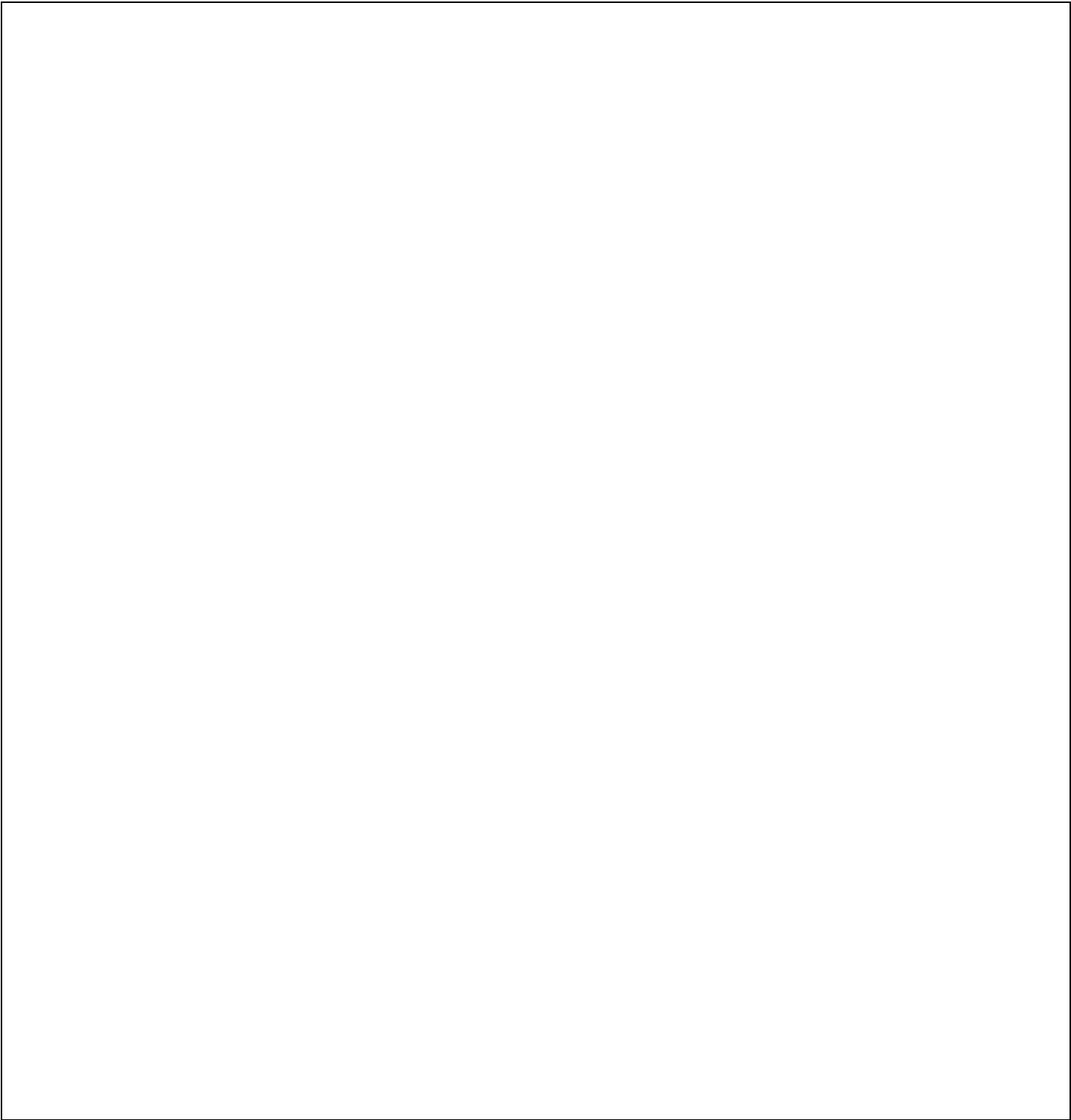
LRE Engineering

1475 Peachtree Street, Suite 220
Atlanta, GA 30309
404/888-8800
Fax 404/876-7797

Academic Programming

Paulien & Associates


899 Logan Street, Suite 508
Denver, CO 80203-3156
303/832-3272
Fax 303/832-3380





Not to Scale
November 1997

Legend

 Above 750'

 700' to 750'

 650' to 600'

 600' to 650'

 Below 600'

Existing Elevations

**The University of Georgia
Physical Master Plan**

Figure III A1.1a

